



MAPEI SYSTEMS GUIDE FOR THE INSTALLATION OF ENGINEERED TIMBER FLOORING

CONTENTS:

- 3) Mapei Systems - Substrate Types.
- 4) System for the Installation of Engineered Timber over Concrete Substrates with Mapei 3 in 1 Adhesive System
- 5) System for the Installation of Engineered Timber over Concrete Substrates with Vapour Barrier
- 6) System for the Installation of Engineered Timber over Concrete Substrates with Vapour Barrier and Self-levelling
- 7) System for the Installation of Engineered Timber over Concrete Substrates with Vapour Barrier, Self-levelling and Acoustic Underlay
- 8) System for the Installation of Engineered Timber over Concrete Substrates with Moisture Barrier and Self-levelling
- 9) System for the Installation of Engineered Timber over Concrete Substrates with Vapour Barrier and Encapsulation of Over-wire heating Cables
- 10) System for the Installation of Engineered Timber over Composite Timber or Fibre Cement Substrates with Self-levelling
- 11) System for the Installation of Engineered Timber over Composite Timber or Fibre Cement Substrates with Self-levelling and Acoustic Underlay
- 12) Mapei E3/AS1 – Internal Moisture Alternative Solution Where a BRANZ Appraised Waterproof Membrane Installation is Required for PS3 Producer Statement and 15 Year Product performance Warranty
- 13) Mapei System Solution BRANZ Appraised Waterproof Membrane Installation for PS3 Producer Statement and 15 Year Product performance Warranty
- 14) MBP (NZ) Ltd Warranty, Contacts and Web Links

*** Contact MBP (NZ) Ltd technical consultants for systems advice on Other/Difficult Substrates**

Substrate Installation and Supplier Technical Documentation Must Be NZBC Compliant and Comply with Building Product Information Requirements.

Mapei Systems - Substrate Types:

Concrete Slab Engineering:

- CANZAC NZ
- Concrete NZ

Composite Timber Construction Board:

- Plywood CCA treated to H3.2
- Strandfloor H3.1 T&G
- Particle Board
- Cross Laminate Timber (CLT)
- Parallel Laminate Timber (PLT)

Fiber Cement Sheet Construction Board i.e.:

- Hardie™ Panel, Secura™
- ETERPAN®

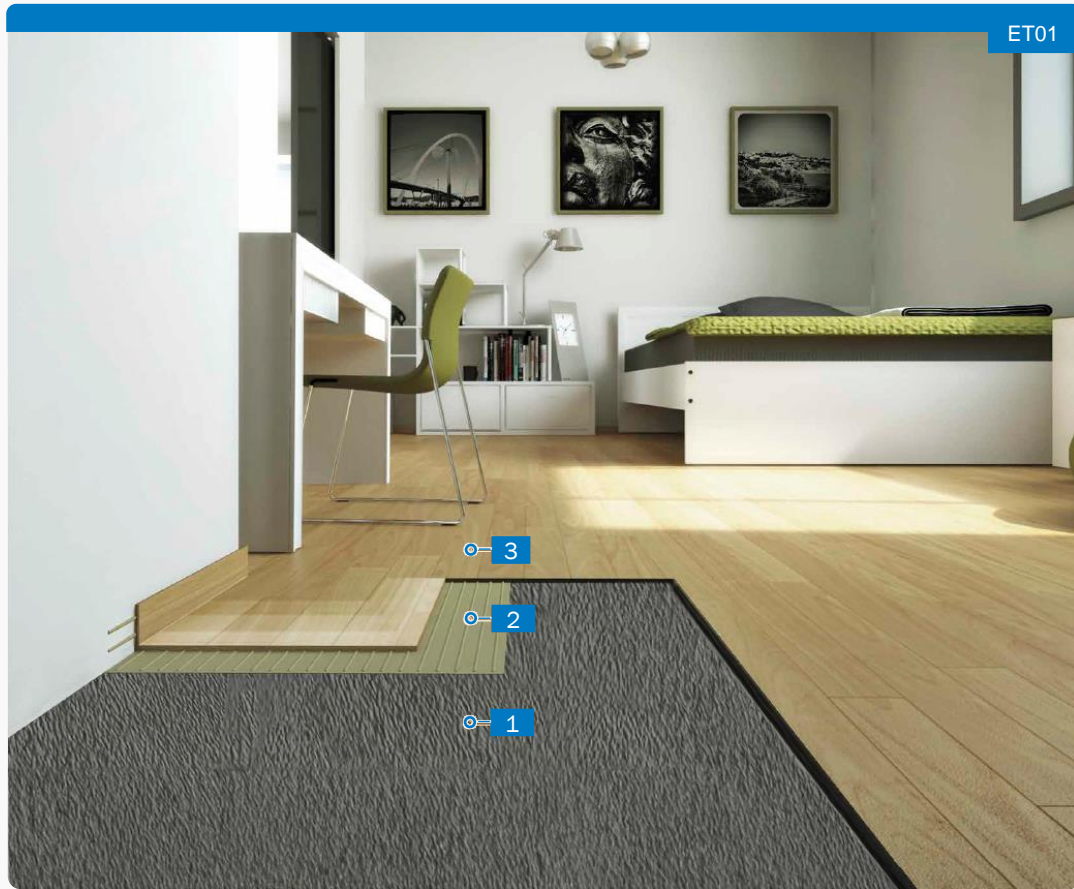
Other/Difficult Substrates:*

- Magnesium Oxide Board
- Polymer Cement Coated Rigid Extruded Polystyrene Foam Board: Marmox
- Tongue & Groove
- Ceramic, Stone & Terrazzo

* Contact MBP (NZ) Ltd technical consultants for systems advice on Other/Difficult Substrates

Substrate Installation and Supplier Technical Documentation Must Be NZBC Compliant and Comply with Building Product Information Requirements.

System for the Installation of Engineered Timber over Concrete Substrates with Mapei 3 in 1 Adhesive System



Products

Discover the products used for this solution and other alternative products

1 Concrete substrate

2



3 IN 1 SOLUTION:
ULTRABOND ECO 995 – TIMBER FLOORING ADHESIVE

3

Engineered timber flooring

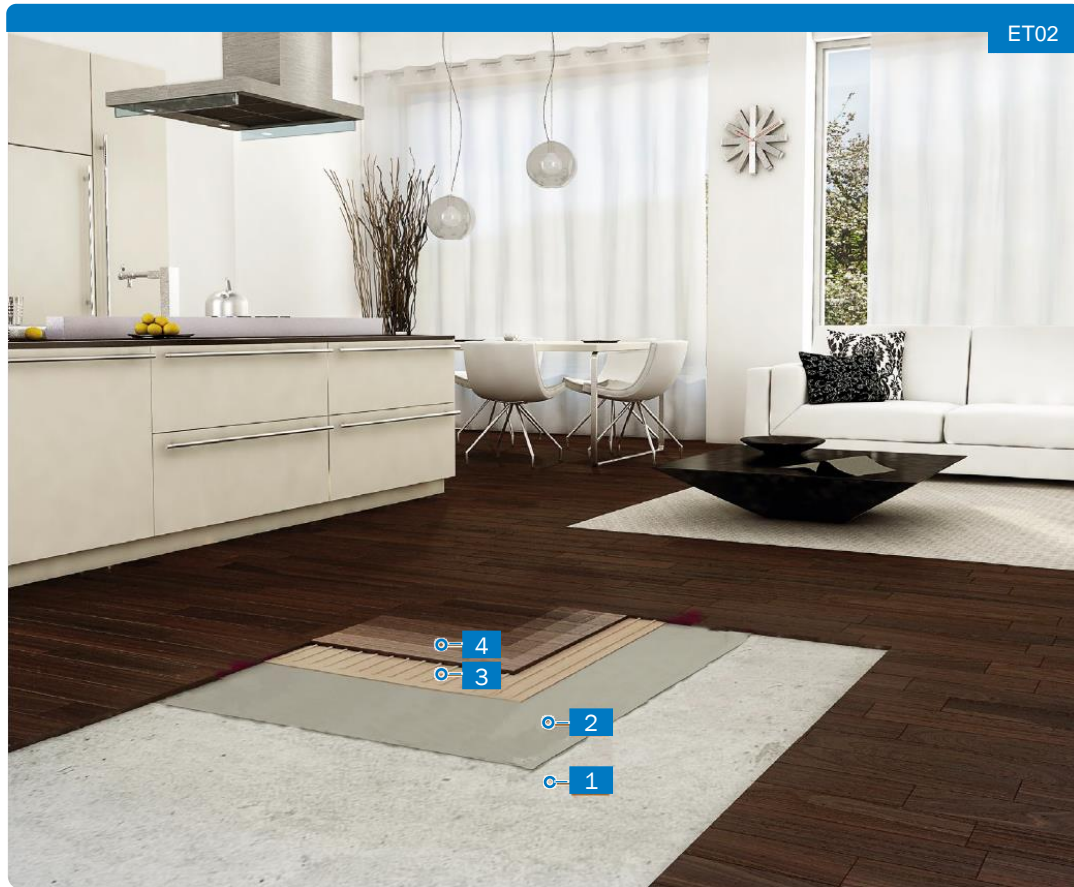
3 IN 1 SOLUTION: ULTRABOND ECO 995 – TIMBER FLOORING ADHESIVE

MAPEI's premium, 100%-solids, one-component, moisture curing urethane adhesive for all types of wood flooring with Moisture-Control & Sound-Reduction.

For new or existing concrete slabs.

For all products, refer to Mapei technical data sheets and specifications. For MBP (NZ) Ltd. warranty refer page 14 of the document.

System for the Installation of Engineered Timber over Concrete Substrates with Vapour Barrier



Products

Discover the products used for this solution and other alternative products

1 Concrete substrate

2  Moisture vapour barrier
MAPEPROOF 1K TURBO

3  Timber flooring adhesive
ULTRABOND ECO S955 1K

4 Engineered timber flooring

For new or existing concrete slabs with NZBC compliant moisture vapour 75% RH or elevated 95% RH reducing.

For all products, refer to Mapei technical data sheets and specifications. For MBP (NZ) Ltd. warranty refer page 14 of the document.

System for the Installation of Engineered Timber over Concrete Substrates with Vapour Barrier and Self-levelling



Products

Discover the products used for this solution and other alternative products

1 Concrete substrate

2 Moisture vapour barrier
MAPEPROOF 1K TURBO



Fast track moisture vapour barrier
MAPEPROOF PRIMER

3 Primer
ECO PRIM T PLUS



4 Levelling compound
ULTRAPLAN ECO



5 Timber flooring adhesive
ULTRABOND ECO S955 1K



6 Engineered timber flooring

For new or existing concrete slabs with NZBC compliant moisture vapour 75% RH or elevated 95% RH reducing.

For all products, refer to Mapei technical data sheets and specifications. For MBP (NZ) Ltd. warranty refer page 14 of the document.

System for the Installation of Engineered Timber over Concrete Substrates with Vapour Barrier, Self-levelling and Acoustic Underlay



ET04

Products

Discover the products used for this solution and other alternative products

1 Concrete substrate

2



Moisture vapour barrier
MAPEPROOF 1K TURBO



Fast track moisture vapour barrier
MAPEPROOF PRIMER

3



Primer
ECO PRIM T PLUS

4



Levelling compound
ULTRAPLAN ECO

5



Acoustic underlay adhesive
ULTRABOND ECO V4SP

6



Acoustic underlay
MAPESONIC CR (10 x 1 m sheets, 4 mm thick)
With the addition of Mapesonic Perimeter Isolation Strip

7



Timber flooring adhesive
ULTRABOND ECO S955 1K

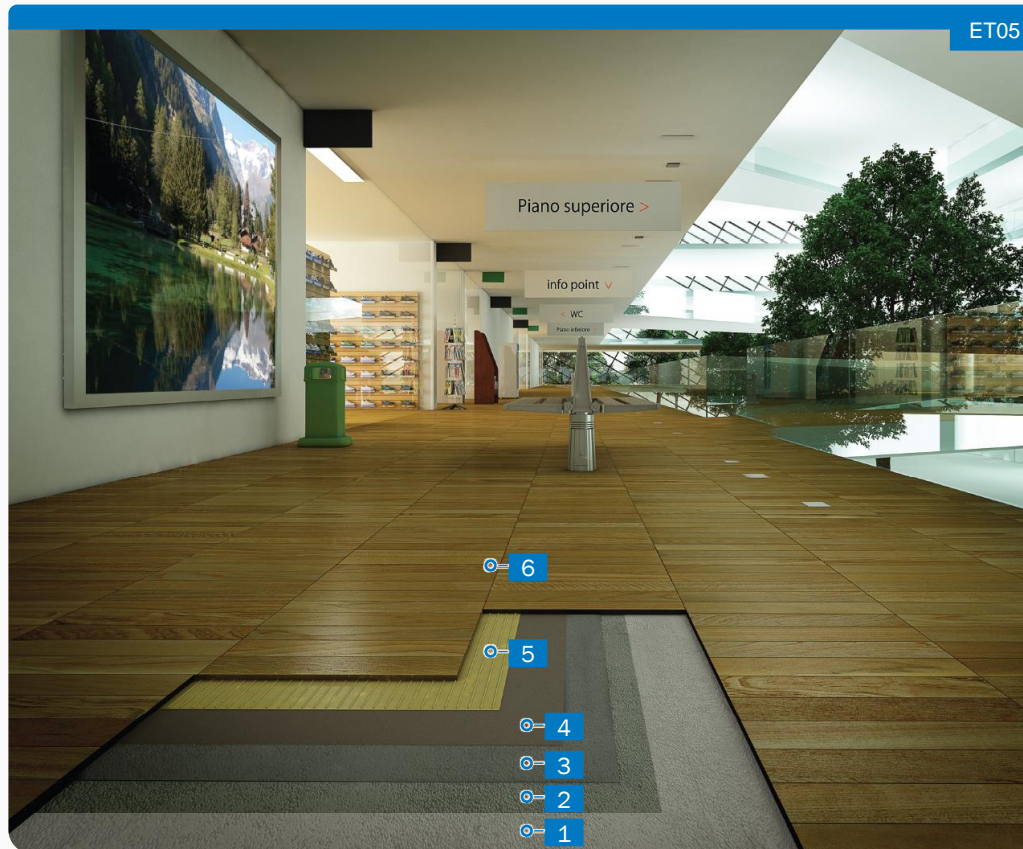
8

Pre finished engineered timber flooring

For new or existing concrete slabs with NZBC compliant moisture vapour 75% RH or elevated 95% RH reducing.

For all products, refer to Mapei technical data sheets and specifications. For MBP (NZ) Ltd. warranty refer page 14 of the document.

System for the Installation of Engineered Timber over Concrete Substrates with Moisture Barrier and Self-levelling



ET05

Products

Discover the products used for this solution and other alternative products

1 Concrete substrate

2 Crack Repair
EPORIP



Moisture Barrier
PLANISEAL MR

3 Primer
ECO PRIM T PLUS



4 Self levelling compound
ULTRAPLAN ECO



5 Timber flooring adhesive
ULTRABOND ECO S955 1K



6 Engineered timber flooring

For concrete slabs with rising damp that are NZBC structurally compliant but have high residual moisture.






For all products, refer to Mapei technical data sheets and specifications. For MBP (NZ) Ltd. warranty refer page 14 of the document.

System for the Installation of Engineered Timber over Concrete Substrates with Vapour Barrier and Encapsulation of Over-wire heating Cables



Products

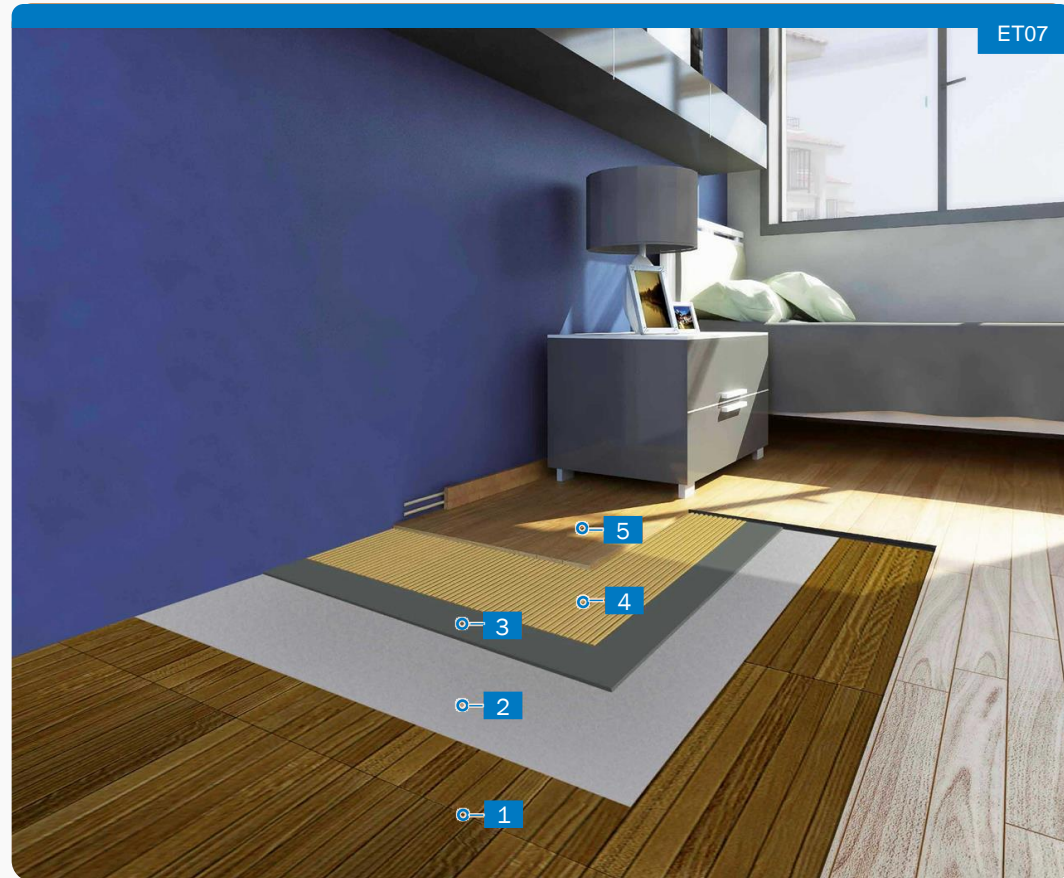
Discover the products used for this solution and other alternative products

- 1 Concrete substrate
- 2  Moisture vapour barrier
MAPEPROOF 1K TURBO  Fast track moisture vapour barrier
MAPEPROOF PRIMER
- 3  Primer
ECO PRIM T PLUS
- 4  Levelling compound
ULTRAPLAN ECO **NZBC COMPLIANT UNDERFLOOR HEATING SYSTEM INSTALLED AS PER SUPPLIER SPECIFICATIONS AND INSTRUCTIONS**
- 5  Timber flooring adhesive
ULTRABOND ECO S955 1K
- 6 Pre finished engineered timber flooring

For new or existing concrete slabs with NZBC compliant moisture vapour 75% RH or elevated 95% RH reducing.

For all products, refer to Mapei technical data sheets and specifications. For MBP (NZ) Ltd. warranty refer page 14 of the document.

System for the Installation of Engineered Timber over Composite Timber or Fibre Cement Substrates with Self-levelling



Products

Discover the products used for this solution and other alternative products

1 Composite substrate

2 Bonding primer
ECO PRIM T PLUS

or



ECO PRIM GRIP PLUS

3 Fibre-reinforced levelling compound
ULTRAPLAN RENOVATION

or



FIBERPLAN

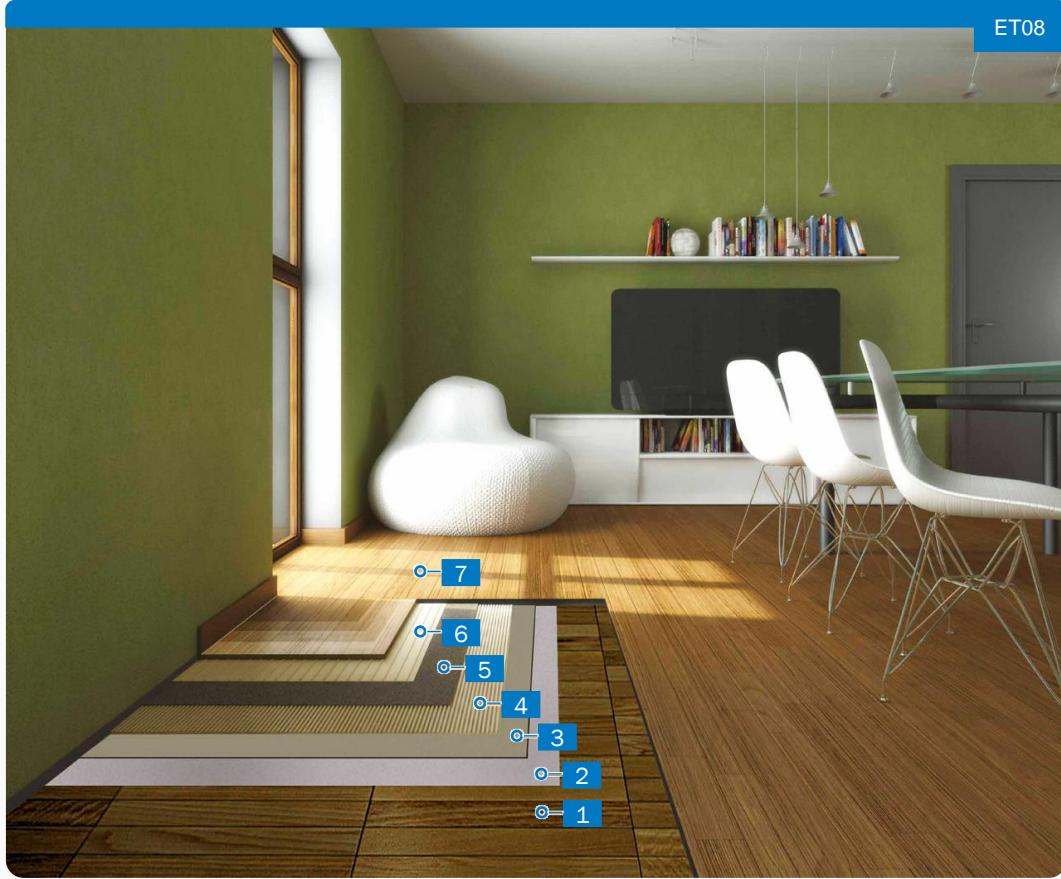
4 Timber flooring adhesive
ULTRABOND ECO S955 1K

5 Engineered timber planks

For substrates such as magnesium oxide board, ridged extruded polyurethane foam, stone and other substrates.
Contact MBP (NZ) Ltd Technical for assistance.








System for the Installation of Engineered Timber over Composite Timber or Fibre Cement Substrates with Self-levelling and Acoustic Underlay

ET08



Products

Discover the products used for this solution and other alternative products

- 1 Properly prepared existing composite substrate
- 2  Bonding primer
ECO PRIM T PLUS or  ECO PRIM GRIP PLUS
- 3  Fibre-reinforced levelling compound
ULTRAPLAN RENOVAZION or  FIBERPLAN
- 4  Acoustic underlay adhesive
ULTRABOND ECO V4SP
- 5  Acoustic underlay
MAPESONIC CR (10 x 1 m sheets, 4 mm thick)
With the addition of Mapesonic Perimeter Isolation Strip
- 6  Timber flooring adhesive
ULTRABOND ECO S955 1K
- 7 Engineered timber flooring

For substrates such as magnesium oxide board, ridged extruded polyurethane foam, stone and other substrates.
Contact MBP (NZ) Ltd Technical for assistance.

For all products, refer to Mapei technical data sheets and specifications. For MBP (NZ) Ltd. warranty refer page 14 of the document.

Mapei E3/AS1 – Internal Moisture Alternative Solution Where a BRANZ Appraised Waterproof Membrane Installation is Required for PS3 Producer Statement and 15 Year Product Performance Warranty

Due to the recent changes to Acceptable Solution E3/AS1, for Clause E3 (Internal Moisture) of the New Zealand Building Code the compliance path for vinyl planking, Laminate and wooden flooring has changed. This is largely due to the reclassification of dishwashers and washing machines as ‘Sanitary Appliances’ and baths, basins, and sinks as ‘Sanitary Fixtures’, and the requirement to contain water from accidental overflow, and protect from regular water splash.

Clause E3.3.2 reads ‘building must be constructed to avoid the likelihood of- Free water from accidental overflow from sanitary fixtures or sanitary appliances causing loss of amenity or damage to household units or other property.

1. Fungal growth or the accumulation of contaminants on linings and other building elements; and
2. Free water overflow penetrating to an adjoining household unit (**Containment**), and
3. Damage to building elements being caused by the presence of moisture.

Examples from:

Code of Practice for Internal Wet Area Membranes 2020. Waterproofing Membrane Association NZ Inc, www.wmai.org.nz

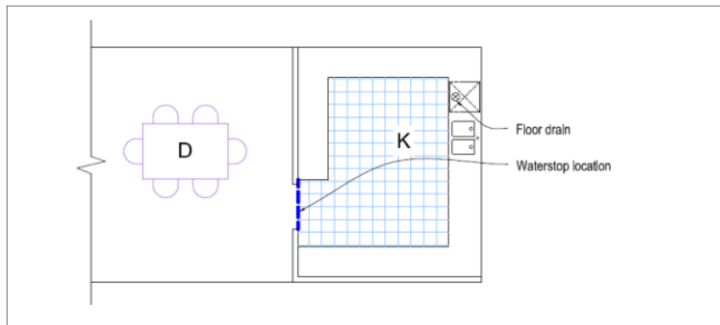


Figure 1: Extent of waterproof membrane system for separate kitchen

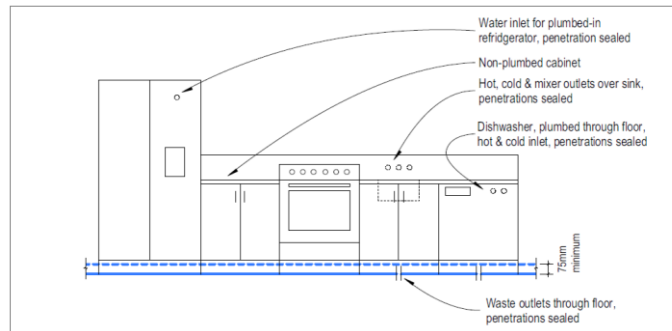


Figure 5: Extent of waterproof membrane behind kitchen cabinets

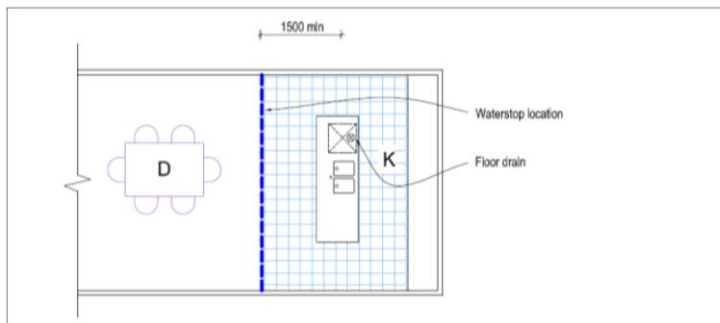
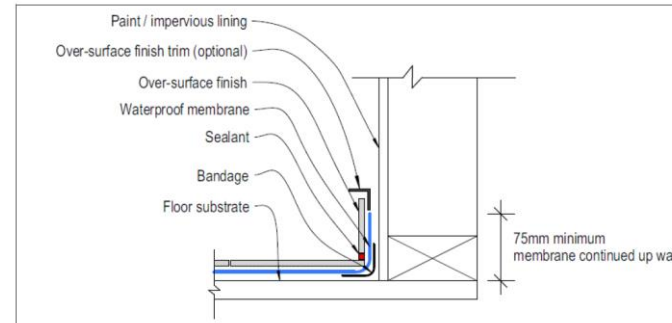


Figure 3: Extent of waterproof membrane system for an island bench with sink in the island



Waterproof membrane system behind skirting

4.5.1 Water-stops

Water-stops must be constructed as shown in Figure 14 below.

At door thresholds, the membrane must be dressed to the base of the door jamb as shown in Figures 18-20 (p47).

Water-stops are required by Section 4.0, Design (p20) at edges of a wet-area waterproof membrane system where an upstand against a wall cannot be formed.

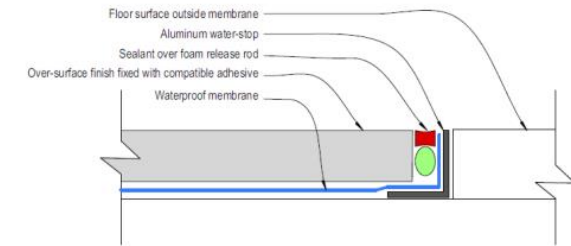


Figure 14: Water-stop at termination of waterproof membrane system

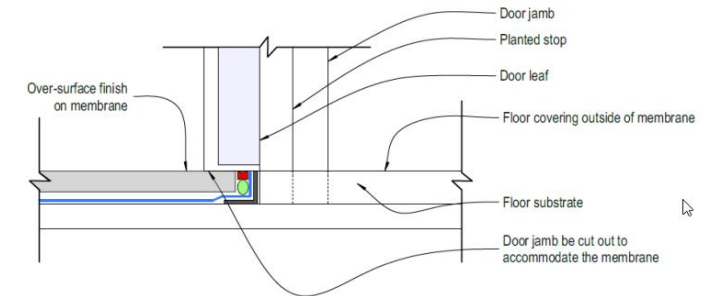


Figure 20: Face of door jamb with water-stop under door

(Notes to this figure are on the next page)

Substrate Installation and Supplier Technical Documentation Must Be NZBC Compliant and Comply with Building Product Information Requirements.

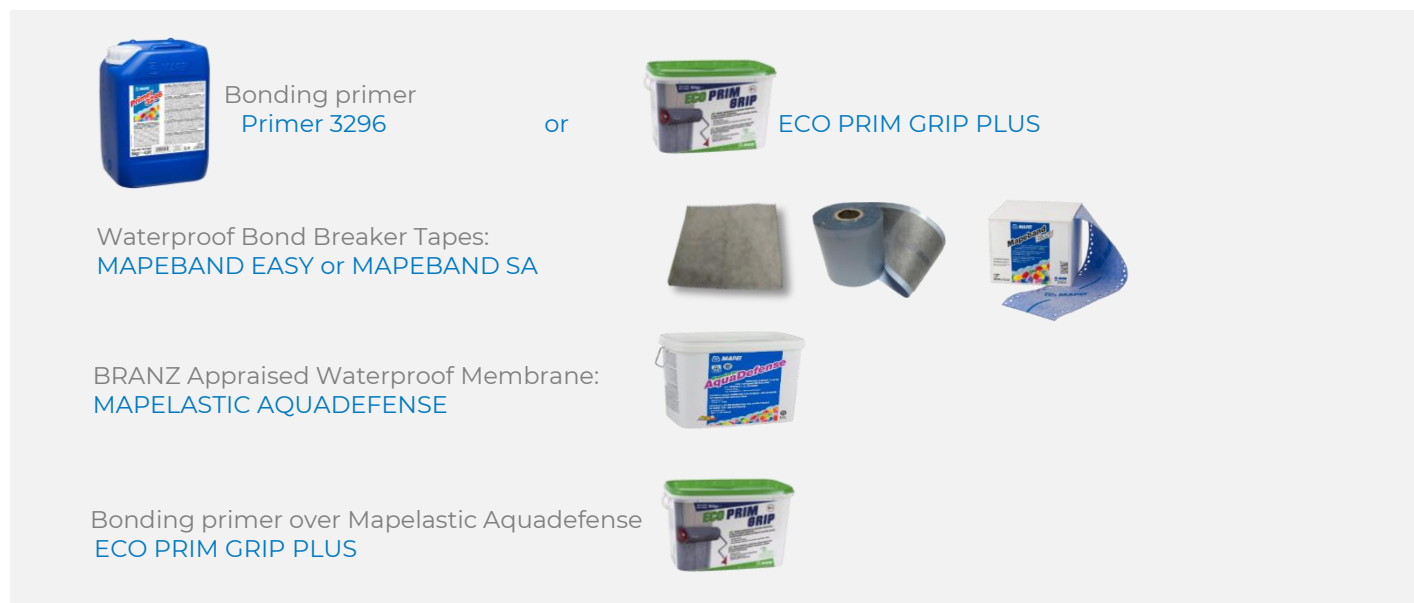
For all products, refer to Mapei technical data sheets and specifications. For MBP (NZ) Ltd. warranty refer page 14 of the document.

Mapei System Solution BRANZ Appraised Waterproof Membrane Installation for PS3 Producer Statement and 15 Year Product performance Warranty

- **Mapelastic AquaDefense BRANZ Appraisal NO. 484** wet area membrane is a liquid applied waterproofing membrane for use under ceramic or stone tile finishes. Also, for resilient, LVT/Hybrid/Laminate and Engineered Wood Flooring types that are certified as an Alternative Solution for Internal **Wet Areas – Clause E3.3.2**

Mapelastic Aquadefense Waterproof Membrane System can be installed into any of the Mapei Engineered Product Systems Solutions.

1. Prime Subfloor
2. Prepare details
 - Junctions
 - Joints
 - Penetrations
 - Drains
3. Apply Mapelastic Aquadefense WPM
4. Primer over WPM



- 🔗 MAPEI NEW ZEALAND LTD will provide a product performance warranty for its liquid applied waterproofing products.
- 🔗 Mapelastic AquaDefense are all warranted for 15 years if the system is applied by a Mapei Trained Applicator.
- 🔗 All MAPEI trained applicators are issued with the applicator number and a Photo ID applicator Card.
- 🔗 MAPEI Product Performance Warranties are applied for online on the following link <https://www.mapei.com/nz/en/warranties>

Substrate Installation and Supplier Technical Documentation Must Be NZBC Compliant and Comply with Building Product Information Requirements.

For all products, refer to Mapei technical data sheets and specifications. For MBP (NZ) Ltd. warranty refer page 14 of the document.

MBP (NZ) Ltd Warranty:

1. Limited Warranty

- a) MBP (NZ) LIMITED (MBP) warrants that when MAPEI products are prepared, applied and installed in accordance with the products' Technical Data Sheet (TDS) plans, specifications, as well as with the relevant provisions of the New Zealand building code, the products will have the properties and characteristics set out in the TDS and will retain these properties and characteristics for the duration of the Warranty Period listed under the relevant MAPEI product warranty.
- b) MBP warranties are limited to its products, and **do not** cover installation, workmanship or product mixing and preparation aspects. It is the sole responsibility of the applicator of the products to assess the substrate and the product/s' suitability for the intended application and final service provision of the product.
- c) A full list of all MBP product warranty terms and conditions is available upon request.

2. No Responsibility

- a) The applicator of a MAPEI product is not an agent or employee of MBP or MAPEI and therefore neither MBP nor MAPEI takes no responsibility and assumes no liability for their workmanship or their use of the product in inappropriate circumstances or surfaces.
- b) Where expressly agreed with you in writing, MBP's representatives may supervise the preparation of MAPEI products to ensure that the preparation meets the products' specifications, on the basis that MAPEI does not take any responsibility for such supervision, as well as for:
 - a. any failure to apply the product in accordance with any relevant specifications, standards, regulation or similar; and
 - b. the use of the product in inappropriate circumstances or on inappropriate (or inappropriately prepared) surfaces; and
 - c. the workmanship of the applicator of the product, even if our representatives are present at the time of application.Any guidance MBP's representatives provide during their supervision will not modify any express manufacturers' warranty or product warranty relating to the relevant MAPEI products.
- c) MBP provides product information, including this specification, on a non-reliance basis. All information and proposals are given in response to the information provided to us. MBP is not liable for the assessment of whether the products and methodologies are suitable for your particular circumstances or whether they meet the requirements of the NZ Building Code or other regulatory requirements. This assessment and decision whether or not to use the products must be made by you.

3. Consumer Guarantees

- a) Nothing in this Specification is intended to modify or negate a consumer's rights and remedies under the Consumer Guarantees Act 1993.
- b) In the event of inconsistency between the provisions of this Specification, our Terms of Trade and the relevant manufacturer's or product warranty, the order of priority set out below will apply (with (a) having the highest priority):
 - a. MBP's Terms of Trade;
 - b. Manufacturer's or product warranty;
 - c. This Specification.See also our terms of trade.

For national technical assistance contact:

Ian Williams

Technical Sales Representative
[+64 29 295 0505](tel:+64292950505)
i.williams@mbpltd.co.nz

Jennifer Price

National Product Manager – Ceramic, Wood and Resilient Line
[+64 29 279 9700](tel:+64292799700)
jennifer.price@mbpltd.co.nz

For details on EPD, VOC certifications, LEED calculations, and Green Star projects, connect with our technical representatives.

Substrate Installation and Supplier Technical Documentation Must Be NZBC Compliant and Comply with Building Product Information Requirements:

For all technical support documents visit the MBP (NZ) Ltd Website:

www.mbpltd.co.nz

 **masterspec partner**

 **E BOSS**

